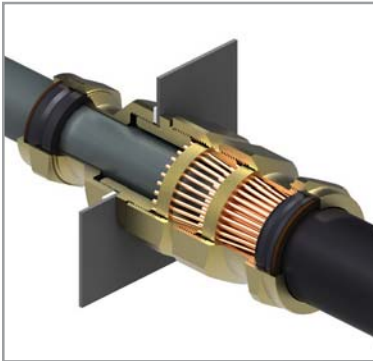


# CW-Dual Screen Gland Kit

## 422DA Series



**The CW Dual screen is a specialised cable gland for the termination of dual layered screen cables.**

### Features and benefits:

- Concentric Bonding Cable gland
- Brass Gland and accessories
- For Dual layer copper wire Screened Concentric Bonding Cables
- Suitable for most climatic conditions, weatherproof and waterproof
- Tandomized armour ring & body arrangement for compact termination of 2 layers of Copper screen wires
- Secondary seal & shroud for topside of the steel structure

### Kit comprises:

- Dual Screen CW Gland
- Nylon Sealing Washer
- Top seal assembly
- LSOH Shroud for Top Seal assembly



## Technical Information:

Suitable for use with all Concentric dual layer copper wire screened bonding cables

Gland rated to IP66 with use of suitable sealing washer or thread sealant at gland interface

Service temperature range -20°C to +90°C

## Specifications

Gland Kit Reference			Cable Dimensions mm					Gland Dimensions mm					
Design Reference	Size	Qty per Kit	Conductor Insulation Ø (A)		Overall Ø (B)		Screen Wire Ø	Entry Thread	Thread Length	Protrusion Length (M)	Protrusion Length (N)	Hexagon	
			Min	Max	Min	Max						A/F (G)	A/C (H)
422DA-90	40	1	17.0	27.2	29.0	39.9	0.9/1.3	M40×1.5	15	92	54	56.4	61.5
422DA-91	50ss	1	23.5	33.5	38.0	46.2	1.85/2.2	M50×1.5	15	100	67	60	66
422DA-92	50s	1	23.5	33.5	39.5	52.6	1.6/2.1	M50×1.5	15	110	67	70.1	77.2
422DA-93	50	1	29.0	39.9	39.5	52.6	1.6/2.1	M50×1.5	15	110	67	70.1	77.2
422DA-95	63	1	39.5	52.6	51.3	65.3	2.2	M63×1.5	15	114	74	80	87.4
422DA-96	75	1	39.6	52.6	62.5	78.0	2.6	M75×1.5	15	126	74	98.8	109.2

