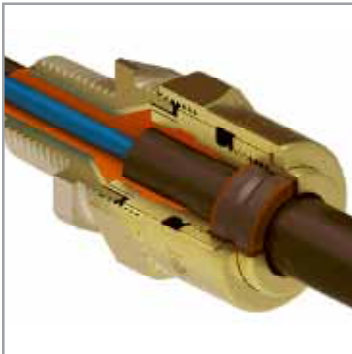


Barr-A 424UB Series



The Barr-A is an explosion proof gland suitable for unarmored marine shipboard cables which aids the control of migrating gases in hazardous and marine areas.

Features and benefits:

- Fast, easy installation
- Large sealing range
- Space and weight saving
- Tested to UL and CSA standards
- For Class I, II & III
- Accepted by 'American Bureau of Shipping' and 'Lloyds Register'

Technical Information:

- Suitable for unarmored marine shipboard cables - category FDLW
- Brass construction with bright autocatalytic nickel coated hub
- Optional bright autocatalytic nickel coating of all brass parts. Add suffix "V" to reference

Connector listed as follows:

½" to 3 ½" CSA Class I Groups ABCD, Class II Groups EFG, Class III
 ½" and ¾" UL Class I Groups ABCD, Class II Groups EFG
 1" to 3 ½" UL Class I Groups CD, Class II Groups EFG

- Compound forms barrier around individual cores, so preventing migration of gases through the centre of the cable
- For use in most climatic conditions, rated to IP66 for wet locations
- Equivalent European designs available: Approved to European & IECEx standards
- Full installation instructions supplied

Specifications

Gland Reference		Cable Dimensions			Gland Dimensions				Weight
Design Reference		Hub Size NPT (D)	Overall Ø (B)		Hub Length (E)	Protrusion Length (F)	Hexagon		lbs
Standard	Fully Plated		Min	Max			A/F (G)	A/C (H)	
424UB-01	424UB-01V	½"	0.14"	0.36"	0.85"	1.55"	1.06"	1.22"	0.5
424UB-02	424UB-02V	½"	0.35"	0.62"	0.85"	1.85"	1.42"	1.57"	0.75
424UB-03	424UB-03V	¾"	0.51"	0.76"	0.86"	1.96"	1.67"	1.89"	1
424UB-04	424UB-04V	1"	0.67"	1.06"	1.07"	2.08"	1.86"	2.11"	1
424UB-05	424UB-05V	1 ¼"	0.95"	1.26"	1.10"	2.16"	2.22"	2.42"	1.75
424UB-15	424UB-15V	1 ½"	0.95"	1.26"	1.11"	2.16"	2.22"	2.42"	1.75
424UB-06	424UB-06V	2"	1.14"	1.65"	1.15"	2.32"	2.76"	3.04"	2.75
424UB-07	424UB-07V	2 ½"	1.61"	2.08"	1.70"	2.24"	3.15"	3.44"	3.5
424UB-08	424UB-08V	3"	1.96"	2.42"	1.76"	2.83"	3.89"	4.30"	6.25
424UB-09	424UB-09V	3 ½"	2.15"	2.91"	1.81"	2.91"	4.18"	4.50"	8.25

